

AC380V Food Grade Oil-Immersed Conveyor Drum Motor For Food Processing Belt Conveyor

Our Product Introduction

for more products please visit us on drum-roller.com

Basic Information

- Place of Origin: China Jiangsu
- Brand Name: Winroller
- Certification: CE, ROHS2.0, EMC, ISO9001
- Model Number: Winroller AC380V Food Grade Oil-Immersed Conveyor Drum Motor
- Minimum Order Quantity: 1 stick
- Price: Contact Us
- Packaging Details: Wooden case
- Delivery Time: 7-15 word days
- Payment Terms: TT, L/C
- Supply Ability: 1000000/year



Product Specification

- Product Name: AC380V Food Grade Oil-Immersed Conveyor Drum Motor
- Product Diameter: 113mm
- Cylinder Material: Food Grade Stainless Steel
- Rated Voltage: 3PH380V
- Rated Power: 120W ~ 550W
- Nominal Belt Speed: 0.09M/S ~1.43M/S
- Speed Range: 60%-120%
- Protection Level: IP69
- Application: Food Processing, Phamaceutical Industry, Packing Machinery, Aiport Baggage Handling System, Meat Processing Industry, Postal Sorting And Belt Conveyor
- Highlight: **Food Processing Conveyor Drum Motor, Food Grade Conveyor Drum Motor, Oil Immersed Conveyor Drum Motor**



More Images



AC380V Food Grade Oil-Immersed Conveyor Drum Motor For Food Processing Belt Conveyor

Features Overview of AC380V Food Grade Oil-Immersed Conveyor Drum Motor

AC380V Food Grade Oil-Immersed Conveyor Drum Motor in a highly efficient stainless steel design with high IP69 sealing performance for low-maintenance operation in demanding food processing environments.

Custom rubberised roller surfaces are used to drive modular belts, eliminating gaps where by-products can accumulate and reducing flushing time and water usage by up to 50%. Winroller is available in a wide range of diameters, belt speeds and industry-specific options to accommodate a variety of material handling and food processing belt conveyor applications.

Main benefits of AC380V Food Grade Oil-Immersed Conveyor Drum Motor

Food grade stainless steel design with IP69 high sealing, fearless in harsh environments!
Equipped with a highly efficient electric motor for 50,000 hours of maintenance-free operation.
Oil-immersed technology saves 30% on power consumption and delivers up to 85% efficiency.
Compact unit design enhances space utilization.
No external moving parts increases operator safety.

Application of AC380V Food Grade Oil-Immersed Conveyor Drum Motor

The roller drum motor is widely used in the food processing, pharmaceutical industry, packing machinery, airport baggage handling system, meat processing industry, postal sorting and belt conveyor, etc.

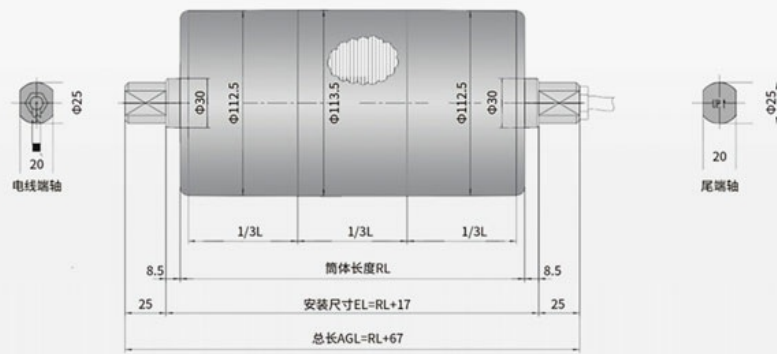
Technical Parameters of AC380V Food Grade Oil-Immersed Conveyor Drum Motor

AC380V Food Grade Oil-Immersed Conveyor Drum Motor

Product Diameter	113mm	Cylinder Material	Food grade stainless steel
Rated Voltage	3PH380V	Rated Power	120W ~ 550W
Nominal Belt Speed	0.09M/S ~1.43M/S	Motor Type	AC asynchronous oil-Immersed drum motor
Speed Range	60%-120%	Protection Level	IP69
Application	Food processing, pharmaceutical industry, packing machinery, airport baggage handling system, meat processing industry, postal sorting and belt conveyor		

Outline dimensions of oil-cooled electric drum

Dimensions of DM113i electric roller

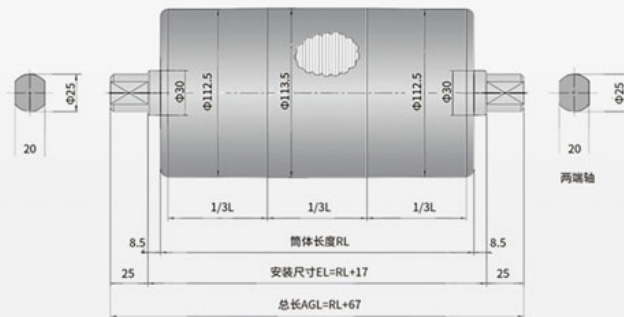


RL = Reference length/Order length * (including capping)

EL = Installation length

AGL is the total length of the axis.

Dimensions of DM113i driven roller



With the minimum cylinder length and weight as the standard, the weight of the electric drum will increase by about 3.8kg for every 100 mm of cylinder length.

Roller characteristics

DM113i-1 *230v/50Hz									
power (KW/hp)	Motor stage	Number of gear poles	Gear ratio	Nominal belt speed(m/s)	torque (Nm)	Tractive force(N)	Rated current(A)	Minimum barrel length (mm)	Weight at mini barrel length(l)
0.12/0.16	4	4	99.38	0.09	78.54	1390.24	0.84	320	12
			80.89	0.11	63.93	1131.58			
			67.23	0.13	53.13	940.49			
		3	60.60	0.14	47.89	847.74		300	10
			49.32	0.17	38.98	689.94			
			41.00	0.21	32.40	573.55			
			37.66	0.23	29.76	526.83			
			31.65	0.27	25.01	442.76			
			25.76	0.33	20.36	360.36			
			21.41	0.40	16.92	299.51			
			19.30	0.44	15.25	269.99			
		2	15.71	0.55	12.42	219.77			
			13.06	0.66	10.32	182.70			
			12.00	0.71	9.48	167.87			
0.18/0.24	4	3	60.60	0.14	71.84	1271.61	1.4	300	10
			49.32	0.17	58.47	1034.91			
			41.00	0.21	48.61	860.33			
			37.66	0.23	44.65	790.24			
			31.65	0.27	37.52	664.13			
			25.76	0.33	30.54	540.54			
			21.41	0.40	25.38	449.26			
		2	19.30	0.44	22.88	404.98			
			15.71	0.55	18.62	329.65			
			13.06	0.66	15.48	274.05			
			12.00	0.71	14.23	251.80			
0.23/0.31	4	3	49.32	0.17	74.71	1322.39	1.67	335	13.5
			41.00	0.21	62.11	1099.31			
			37.66	0.23	57.05	1009.76			
			31.65	0.27	47.94	848.61			
			25.76	0.33	39.02	690.69			
			21.41	0.40	32.43	574.05			
		2	19.30	0.44	29.24	517.48			
			15.71	0.55	23.80	421.22			
			13.06	0.66	19.78	350.17			
			12.00	0.71	18.18	321.75			

DM113i-3i*400V/50Hz

power (KW/hp)	Motor stage	Number of gear poles	Gear ratio	Nominal belt speed(m/s)	torque (Nm)	Tractive force(N)	Rated current(A)	Minimum barrel length (mm)	Weight at mini barrel length(i)
0.15/0.2	4	4	80.89	0.11	79.91	1414.47	0.47	320	12
			67.23	0.13	66.42	1175.61			
			60.60	0.14	59.87	1059.67			
		3	49.32	0.17	48.72	862.43			
			41.00	0.21	40.51	716.94			
			37.66	0.23	37.21	658.54			
			31.65	0.27	31.27	553.44			
			25.76	0.33	25.45	450.45			
			21.41	0.40	21.15	374.38			
			19.30	0.44	19.07	337.49			
		2	15.71	0.55	15.52	274.71			
			13.06	0.66	12.90	228.37			
			12.00	0.71	11.86	209.84			

0.18/0.24	4	4	67.23	0.13	79.70	1410.73	0.57	342	14
			60.60	0.14	71.84	1271.61			
		3	49.32	0.17	58.47	1034.91			
			41.00	0.21	48.61	860.33			
			37.66	0.23	44.65	790.24			
			31.65	0.27	37.52	664.13			
			25.76	0.33	30.54	540.54			
			21.41	0.40	25.38	449.26			
			19.30	0.44	22.88	404.98			
		2	15.71	0.55	18.62	329.65			
			13.06	0.66	15.48	274.05			
			12.00	0.71	14.23	251.80			

0.25/0.34	4	3	49.32	0.17	81.21	1437.38	0.84	324	11.5
			41.00	0.21	67.51	1194.90			
			37.66	0.23	62.01	1097.56			
			31.65	0.27	52.11	922.41			
			25.76	0.33	42.42	750.75			
			21.41	0.40	35.25	623.97			
		2	19.30	0.44	31.78	562.48			
			15.71	0.55	25.87	457.85			
			13.06	0.66	21.50	380.62			
			12.00	0.71	19.76	349.73			

0.25/0.34	2	4	99.38	0.17	81.82	1448.16	0.68	300	10
			80.89	0.21	66.59	1178.73			
			67.23	0.26	55.35	979.67			
		3	60.60	0.28	49.89	883.06			
			49.32	0.35	40.60	718.69			
			41.00	0.42	33.75	597.45			
	37.66		0.46	31.00	548.78				
	31.65		0.54	26.06	461.20				
	25.76		0.67	21.21	375.37				
	2	21.41	0.80	17.63	311.99				
		19.67	0.87	16.19	286.63				
		19.30	0.89	15.89	281.24				
		15.71	1.09	12.93	228.93				
		13.06	1.31	10.75	190.31				
12.00		1.43	9.88	174.86					

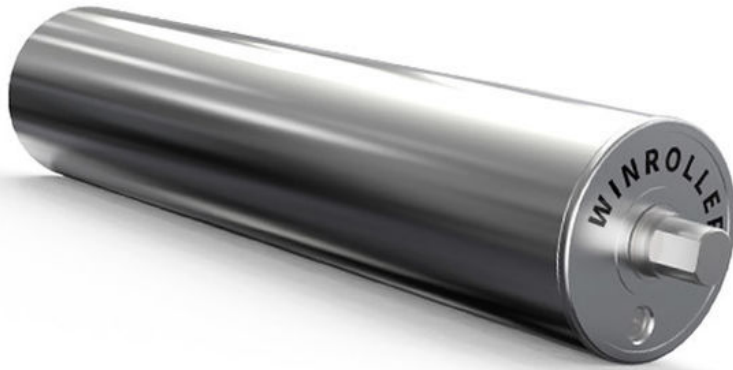
0.37/0.5	4	3	31.65	0.27	77.13	1365.16	1.13	324	11.5
			25.76	0.33	62.77	1111.11			
			21.41	0.40	52.17	923.48			
		2	19.30	0.44	47.03	832.47			
			15.71	0.55	38.28	677.62			
			13.06	0.66	31.83	563.32			
	12.00	0.71	29.24	517.60					

0.37/0.5	2	4	67.23	0.26	81.92	1449.92	0.92	325	11.5
			60.60	0.28	73.84	1306.93			
			49.32	0.35	60.09	1063.66			
			41.00	0.42	49.96	884.23			
			37.66	0.46	45.89	812.20			
			31.65	0.54	38.56	682.58			
		3	25.76	0.67	31.39	555.55			
			21.41	0.80	26.09	461.74			
			19.67	0.87	23.97	424.21			
			19.30	0.89	23.52	416.23			
			15.71	1.09	19.14	338.81			
			13.06	1.31	15.91	281.66			
	2	12.00	1.43	14.62	258.80				

0.55/0.75	2	3	41.00	0.42	74.26	1314.39	1.24	335	13.5
			37.66	0.46	68.21	1207.32			
			31.65	0.54	57.32	1014.65			
			25.76	0.67	46.66	825.82			
			21.41	0.80	38.78	686.37			
			19.67	0.87	35.63	630.59			
		2	19.30	0.89	34.96	618.73			
			15.71	1.09	28.45	503.64			
			13.06	1.31	23.65	418.68			
			12.00	1.43	21.73	384.70			

Note : It's just the typical technical data for you reference, The specification such as voltage, speed, torque, shaft can be customized by your needs. Please contact us for more details. Thanks.

Feature Picture of AC380V Food Grade Oil-Immersed Conveyor Drum Motor





WIN ROLLER JIANG SU Winroller Technology Co., Ltd.

+86 18168399322 winroller.market@gmail.com drum-roller.com

No. 7, Xiye Road, Huishan District, Wuxi City, Jiangsu Province, China